

# Welcome/Bienvenido

Green Eagle Railroad Project  
Environmental Impact Statement

## Scoping Meeting



Proyecto del Ferrocarril Green Eagle  
Declaración de Impacto Ambiental

## Reunión de Alcance





Green  
Eagle  
Railroad  
EIS

# Meeting Ground Rules

The Surface Transportation Board is committed to providing fair and equal opportunity for all members of the public to participate in this public meeting.

Accordingly, the following are **not permitted** in the meeting room:



- Demonstrations
- Petition efforts
- Literature distribution
- Protests
- Signs or placards



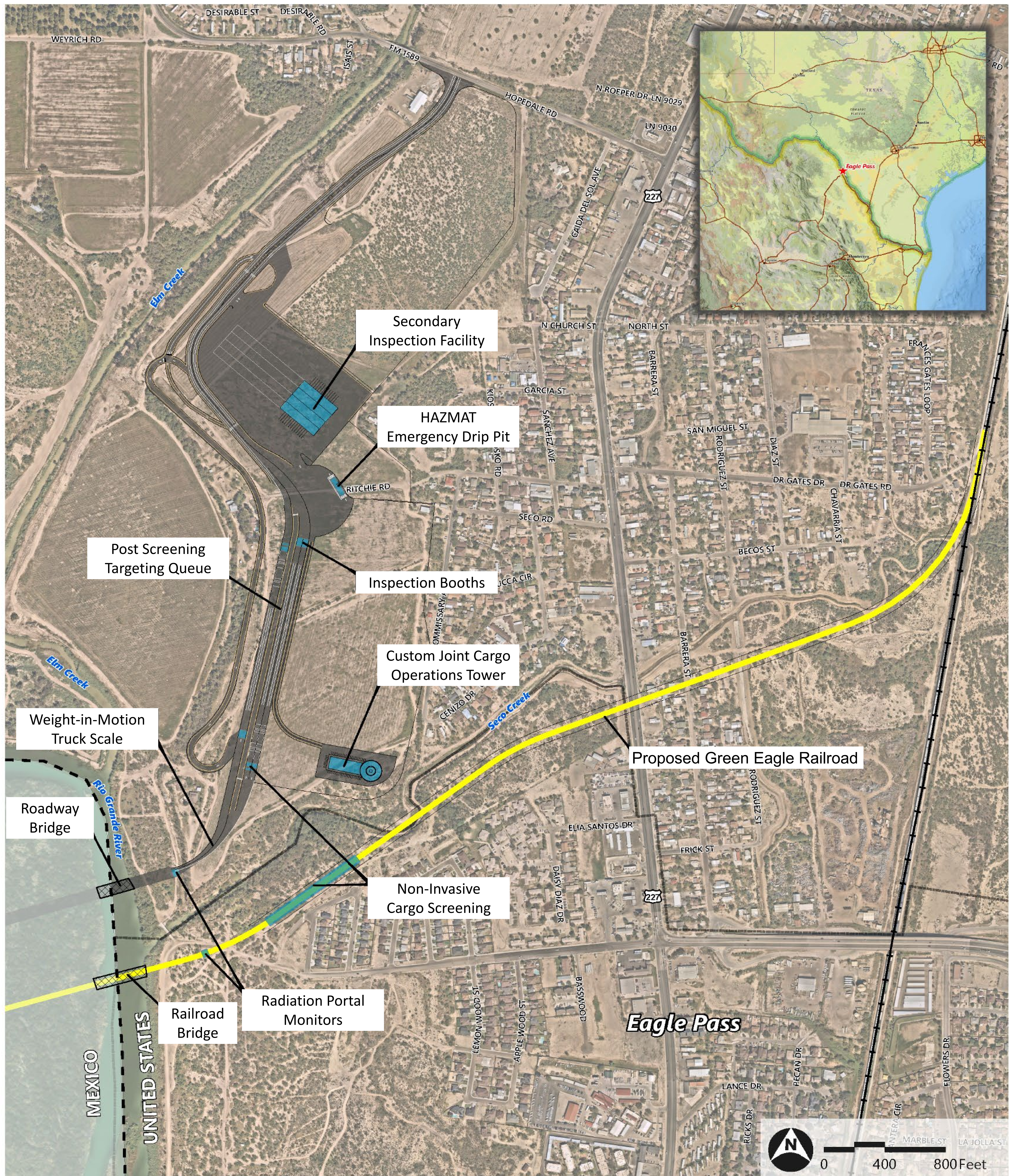
- Please be courteous to other meeting participants and their right to participate in the scoping process.

By entering the meeting room, you agree to abide by these ground rules.

---

Individuals or groups who disrupt the public meeting will be asked to leave.





## Proposed Action







# Purpose and Need

Green Eagle Railroad's (GER's) purpose for constructing and operating the proposed rail line is to develop an economically viable solution to meet the need for border infrastructure improvements at Eagle Pass that increase safety and facilitate binational trade between the United States and Mexico.

According to GER, the proposed rail line would:

- Resolve rail congestion
- Reduce cross border wait times
- Route rail traffic around the urban center of Eagle Pass

The proposed rail line is not a federal government-proposed or sponsored project. It would be part of a larger project, the Puerto Verde Global Trade Bridge (PVGTB). Parts of PVGTB other than the rail line are outside the jurisdiction of the Surface Transportation Board but will be considered as appropriate when evaluating environmental impacts.





Green  
Eagle  
Railroad  
EIS

# Key Participants, Anticipated Permits and Other Authorizations

## Federal Agencies with Decisions



### Surface Transportation Board

- Authorizes the proposed rail line
- Lead federal agency for the EIS



### U.S Coast Guard

- Permits the proposed rail and road bridges
- Cooperating agency for the EIS



### U.S Army Corps of Engineers

- Permits activities requiring filling wetlands



### International Boundary and Water Commission

- Authorizes work in bed and bank of international stretch of the Rio Grande

## Applicant: Green Eagle Railroad LLC

- Requested authority to construct & operate the proposed rail line
- Subsidiary of Puerto Verde Holdings (PVH)
- PVH is proposing to construct the Puerto Verde Global Trade Bridge project (PVGTB)
- The proposed rail line is part of the Corridor

## Anticipated Permits and Other Authorizations

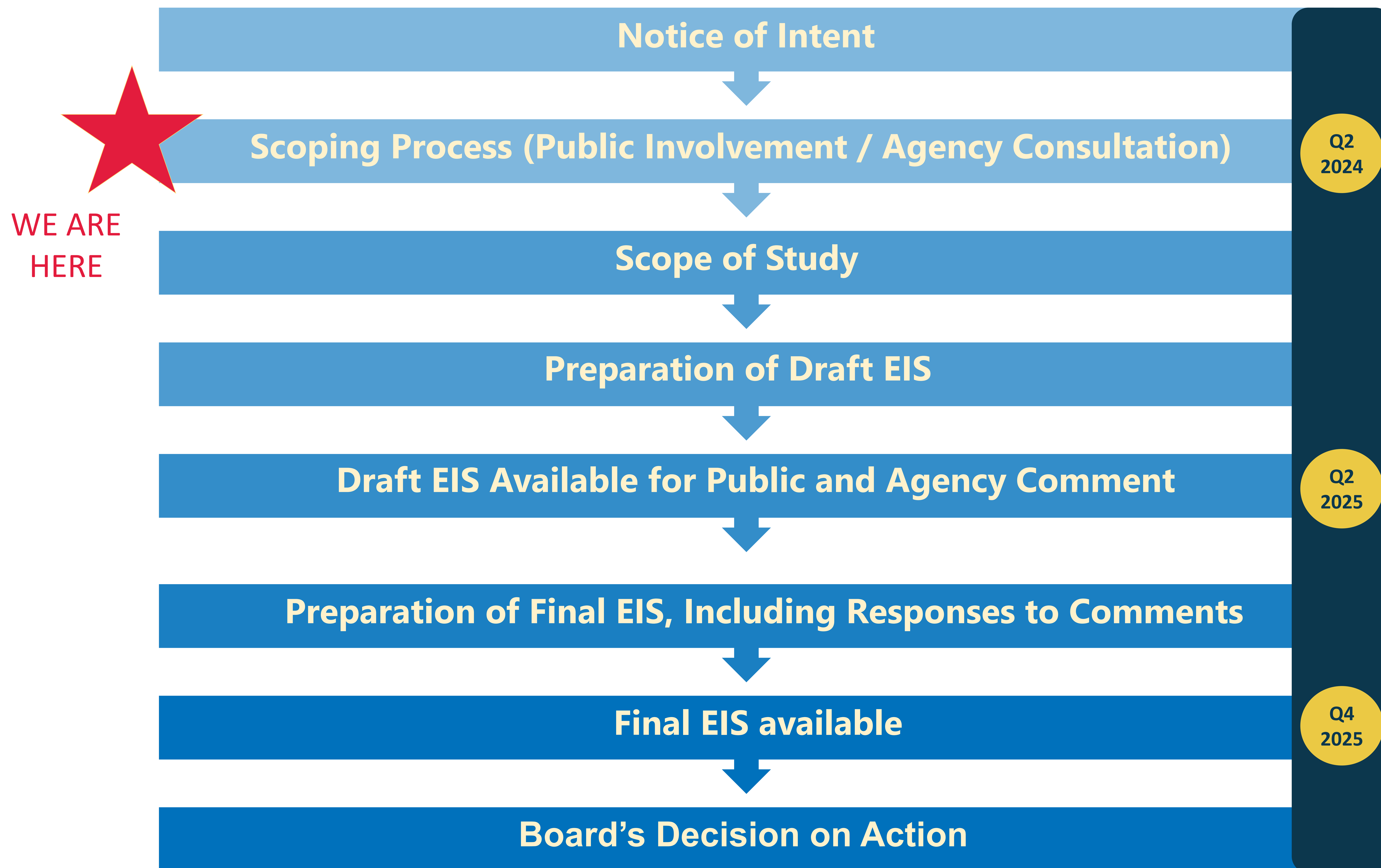
- Clean Water Act Section 404 permit and Section 401 certification
- Rivers and Harbors Act Section 9 and 10 permits
- Endangered Species Act Section 7 compliance
- National Historic Preservation Act Section 106 compliance
- International Boundary and Water Commission authorization for work in the bed and bank of the international stretch of the Rio Grande
- Presidential Permit
- Texas General Land Office easement authorization for the bed of the Rio Grande to the international boundary line
- Maverick County development permits, including a floodplain development permit
- Other state and local permits, as required





Green  
Eagle  
Railroad  
EIS

# Environmental Impact Statement Process

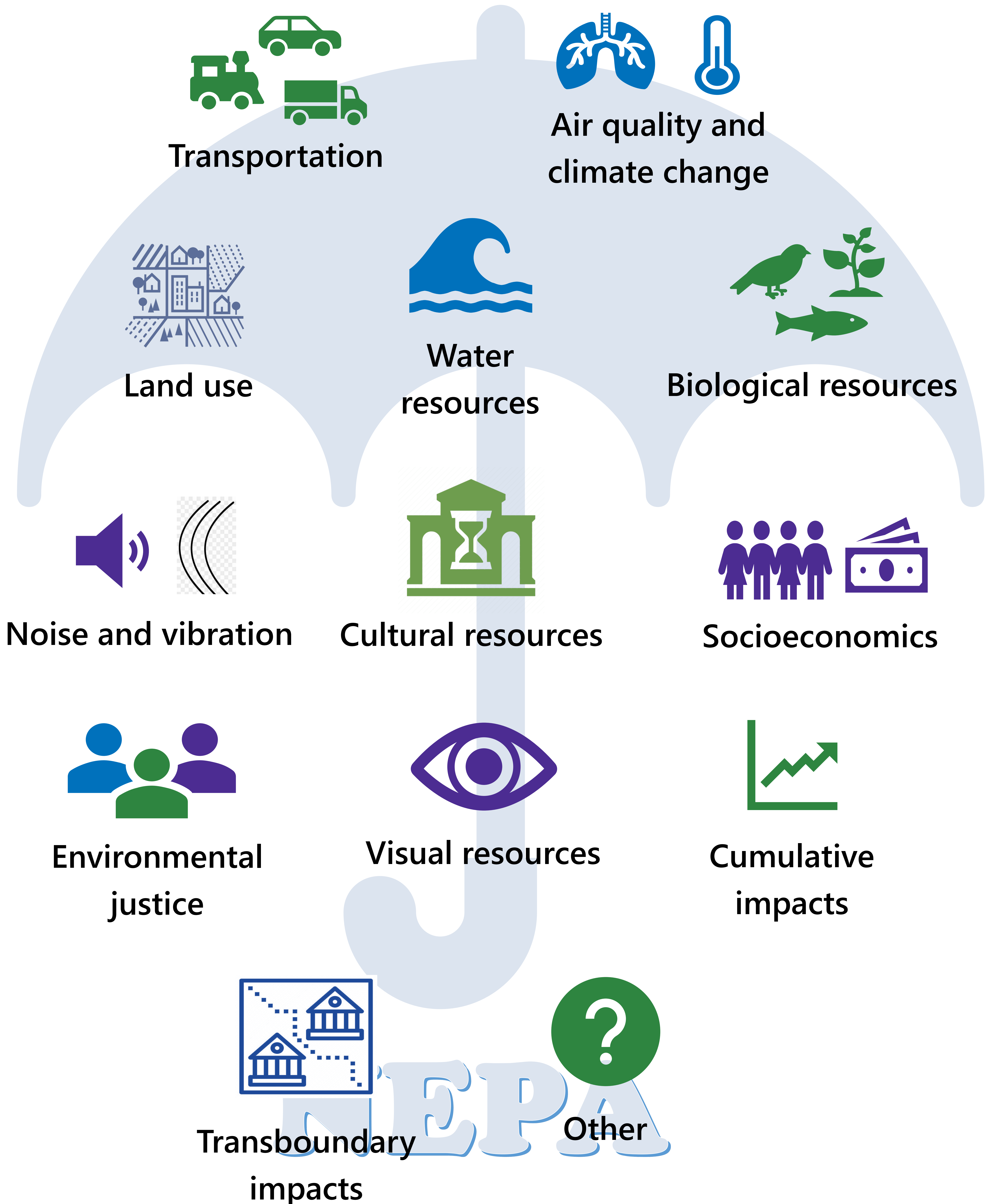






Green  
Eagle  
Railroad  
EIS

# Potential EIS Impact Areas



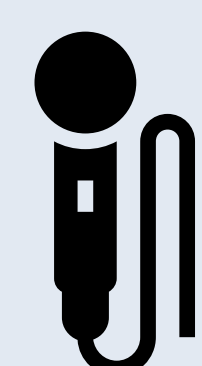




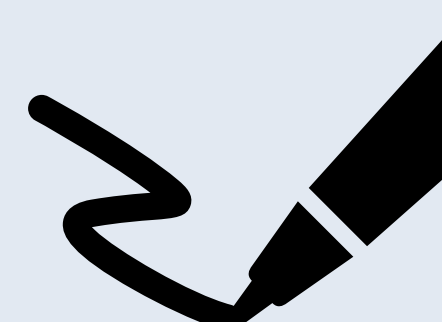
Green  
Eagle  
Railroad  
EIS

# How to Comment

## Today's Public Meeting



Make an oral comment



Write a comment on a comment form and place it in the comment box



Record your comment

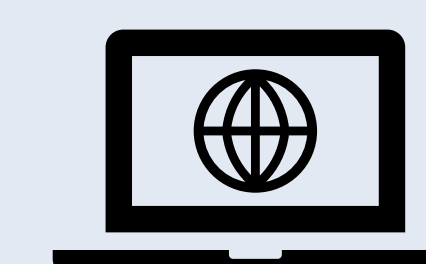
## Online Meeting



Tuesday, April 23

- 6:00 p.m. to 8:00 p.m.
- Go to the project website to learn how to join:  
[www.greeneaglerreis.com](http://www.greeneaglerreis.com)

## Electronic Comments



Submit electronic comments by visiting the Board's website, [www.stb.gov](http://www.stb.gov), under the heading "E\_FILING". Refer to Docket No. FD 36652

## Mailed Comments



Mail your comments to:  
Andrea Poole  
Surface Transportation Board  
c/o VHB  
Attention: Environmental Filing  
Docket No. FD 36652  
1001 G Street NW, Suite 1125  
Washington, DC 20001

For more information, visit: [www.greeneaglerreis.com](http://www.greeneaglerreis.com)

Comments will be accepted through **Monday, April 29, 2024**  
Please refer to Docket No. FD 36652 in all correspondence.



Questions?

[contact@greeneaglerreis.com](mailto:contact@greeneaglerreis.com)

Toll-Free Information Line (888) 319-2337